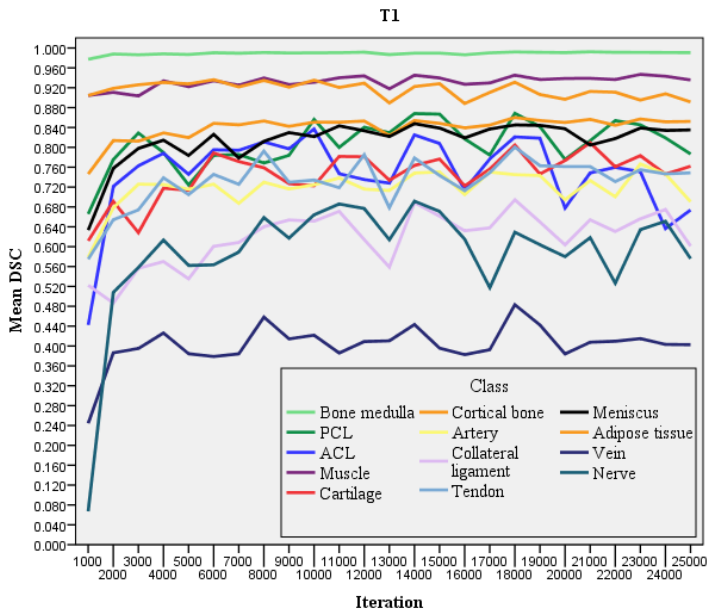


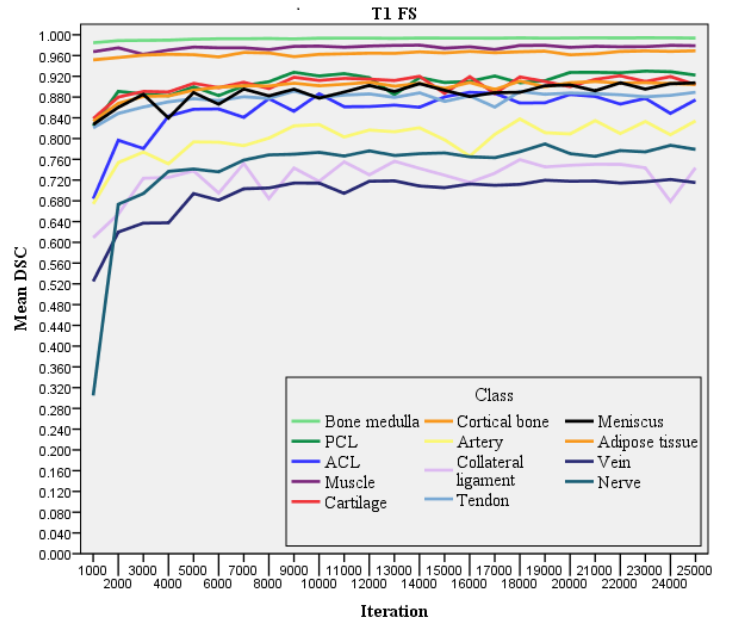
# 1 Supplementary materials

	T1	T1FS	T1FS	T1PDFS
Bone medulla	$0.992 \pm 0.001$	$0.994 \pm 0.001$	$0.939 \pm 0.049$	$0.994 \pm 0.001$
PCL	$0.813 \pm 0.058$	$0.928 \pm 0.011$	$0.795 \pm 0.087$	$0.868 \pm 0.020$
ACL	$0.749 \pm 0.111$	$0.881 \pm 0.023$	$0.804 \pm 0.075$	$0.870 \pm 0.029$
Muscle	$0.939 \pm 0.011$	$0.978 \pm 0.001$	$0.970 \pm 0.006$	$0.982 \pm 0.001$
Cartilage	$0.809 \pm 0.028$	$0.914 \pm 0.008$	$0.855 \pm 0.041$	$0.928 \pm 0.004$
Bone cortex	$0.856 \pm 0.010$	$0.910 \pm 0.007$	$0.776 \pm 0.068$	$0.910 \pm 0.009$
Artery	$0.733 \pm 0.034$	$0.835 \pm 0.033$	$0.751 \pm 0.058$	$0.817 \pm 0.034$
Collateral ligament	$0.654 \pm 0.036$	$0.751 \pm 0.052$	$0.439 \pm 0.129$	$0.675 \pm 0.084$
Tendon	$0.761 \pm 0.020$	$0.887 \pm 0.012$	$0.706 \pm 0.059$	$0.894 \pm 0.018$
Meniscus	$0.805 \pm 0.035$	$0.892 \pm 0.021$	$0.876 \pm 0.027$	$0.907 \pm 0.019$
Adipose tissue	$0.913 \pm 0.025$	$0.963 \pm 0.008$	$0.919 \pm 0.025$	$0.972 \pm 0.006$
Vein	$0.408 \pm 0.022$	$0.718 \pm 0.015$	$0.665 \pm 0.031$	$0.734 \pm 0.016$
Nerve	$0.618 \pm 0.119$	$0.766 \pm 0.054$	$0.636 \pm 0.066$	$0.804 \pm 0.045$

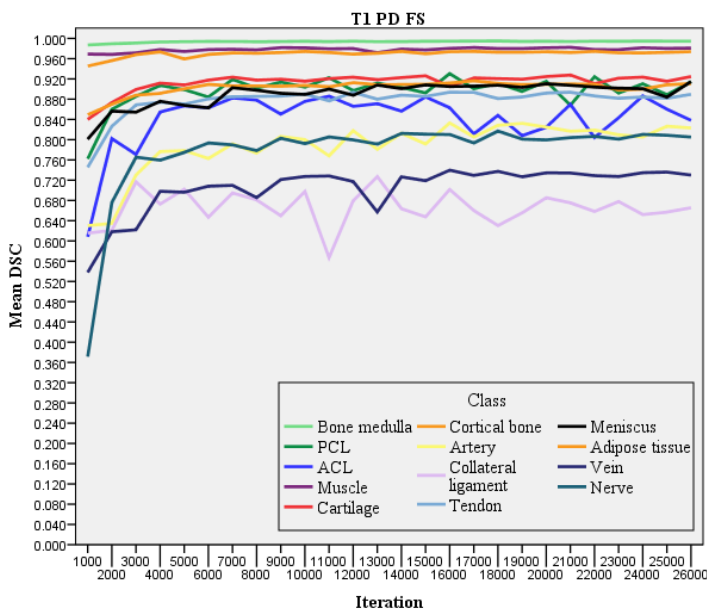
Supplementary Table 1: Mean DSC  $\pm$  standard deviation of the respective image channel combinations for each individual anatomical class at 21,000 iterations



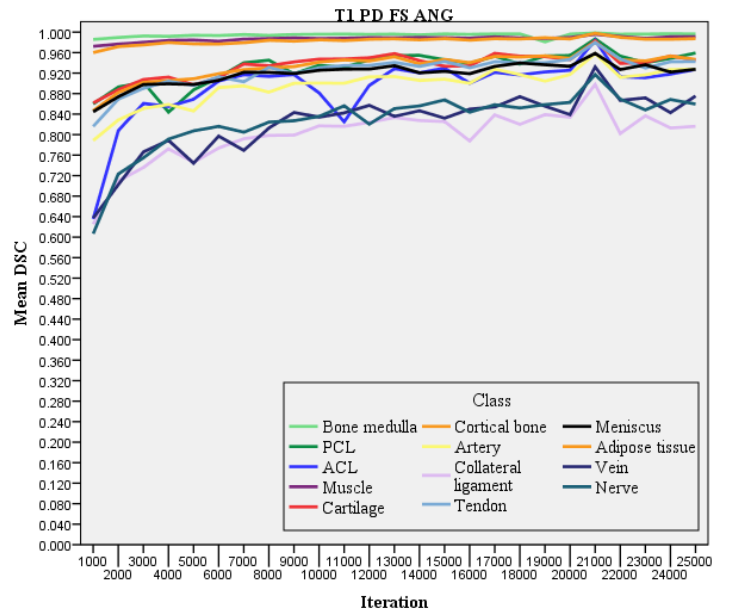
(a) Training T1 alone



(b) Combining T1 & FS



(c) T1, PD & FS combination



(d) All the channels T1, PD, FS, Angio together.

Supplementary Figure 1: Validation curves of the DSC obtained during training for (a) Training T1 alone, (b) combining T1 & FS (c) T1, PD & FS combination and (d) all the channels T1, PD, FS, Angio together.