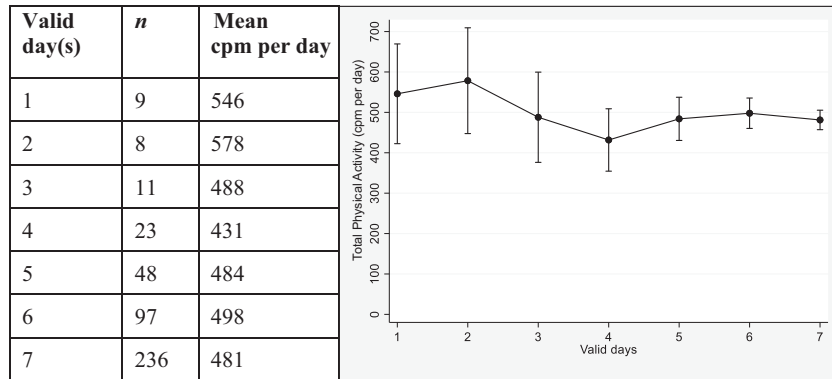
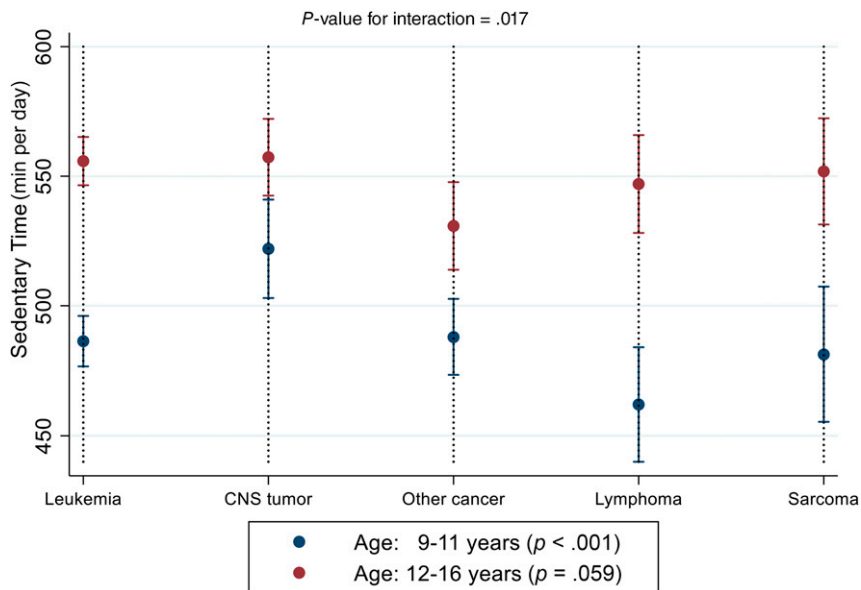


Supplemental Information



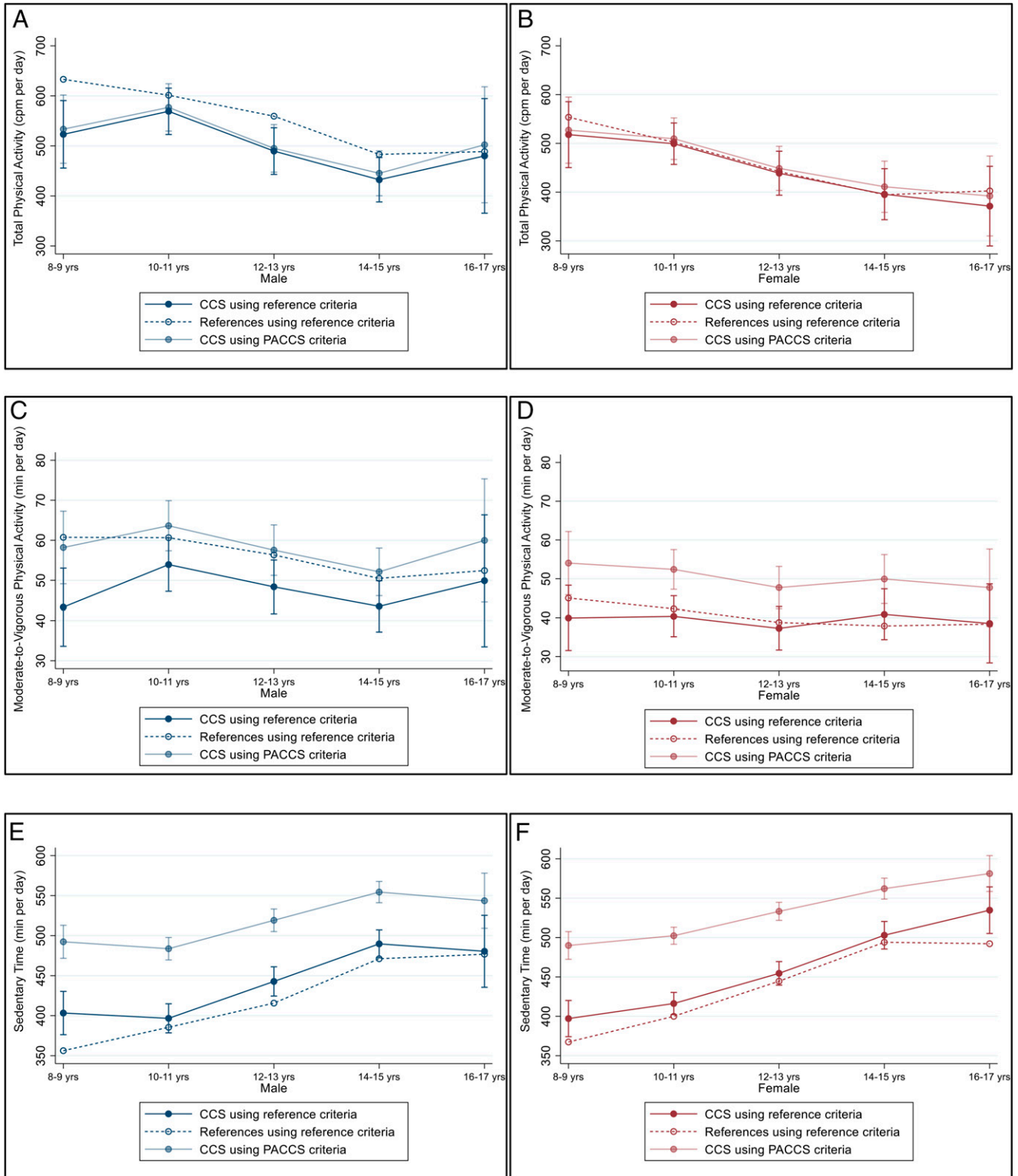
SUPPLEMENTAL FIGURE 4

Participants' total physical activity according to the number of valid days ($n = 432$). Dots represent mean counts per minute per day and whiskers represent 95% confidence intervals.



SUPPLEMENTAL FIGURE 5

Sedentary time stratified by diagnostic group and age category ($n = 432$). Dots represent marginal means and whiskers represents 95% confidence intervals. P -values given in legend represents global p -value for the association between diagnostic group and sedentary time for the respective age category.



SUPPLEMENTAL FIGURE 6

(A and B) Total physical activity (counts per minute). (C and D) Moderate-to-vigorous physical activity. (E and F) Sedentary time in adolescent childhood cancer survivors (solid lines, $n = 432$) and references⁴⁰ (dashed line), stratified by sex and age category.* Dots represent marginal means and whiskers represent 95% confidence intervals. Graphs represent cross-sectional data (connective lines for visual purposes only). Analyses are adjusted for country and season. Analyses on moderate-to-vigorous physical activity and sedentary time are additionally adjusted for wear-time. *In the age category 8 to 9 years, only 2 8-year-old CCS are included. In the age category 16 to 17 years, only 4 17-year-old CCS are included. Female CCS, $n = 206$; male CCS, $n = 226$.

SUPPLEMENTAL TABLE 4 Processing Criteria for the Accelerometer Analyses in the Current Study		
	PACCS Criteria	Reference Criteria
Epoch length	10-s	60-s
Nonwear time (consecutive 0s:interruption)	20:0 min	60:2 min
Valid day criteria	≥480 min	≥480 min
Number of valid days to be included in the analyses	1 d	1 d
Cut-off points ^a	Evenson	Evenson

^a Evenson KR, Mota J. Progress and future directions on physical activity research among youth. *J Phys Act Health.* Feb 2011;8(2):149–151.

SUPPLEMENTAL TABLE 5 Basic Characteristics of Participants and Nonparticipants in the Study			
	Participants <i>n</i> = 432	Nonparticipants <i>n</i> = 234^a	<i>P</i>
Sex			.365
Male	226 (52)	131 (56)	
Female	206 (48)	103 (44)	
Age at study, years ^b	12.2 ± 2.2	12.6 ± 2.2	.024
Age at diagnosis, years ^c	5.1 ± 3.3	5.1 ± 3.4	.942
Time since diagnosis, years ^c	7.0 ± 3.3	7.6 ± 3.4	.069
Time since treatment, years ^d	5.5 ± 3.2	5.8 ± 3.3	.299
Diagnostic group ^e			.109
I. Leukemia	203 (47)	85 (40)	
III. CNS tumor	69 (16)	35 (17)	
II, IV–XII. Tumor outside CNS	160 (37)	90 (43)	

Data presented as *n* (%) or mean ± SD.

^a Nonparticipants consisted of those who declined, those with invalid accelerometer data or <1 valid day of accelerometer wear. Missing information on 60 nonparticipants.

^b Missing information on age at inclusion in 23 nonparticipants.

^c Missing information on age at diagnosis and time since diagnosis in 70 nonparticipants.

^d Missing information on time since treatment in 4 participants and 70 nonparticipants.

^e Missing information on diagnosis in 24 nonparticipants.